

Steam Insulated Pipe

Tangshan Xingbang Pipeline Engineering Equipment Co., Ltd

No. 1608, Tengfei Road, Houhu Industrial Park, Economic Development Zone, Yutian County, Hebei Province
T: 0315-6575351 VIP: 400-700-1995

Beijing Xingbang Energy Saving Technology Co., Ltd

No. 183, Dongfang Street, Jinzhou Development Zone, Jingzhou City, Hubei Province
T: 0716-8376166



Contents

1. Prefabricated Directly Buried Steam Insulated Pipe
2. Prefabricated Steam Insulated Pipe of Overhead and Utility Tunnel
3. Prefabricated Steam Insulated Pipe **Fittings**

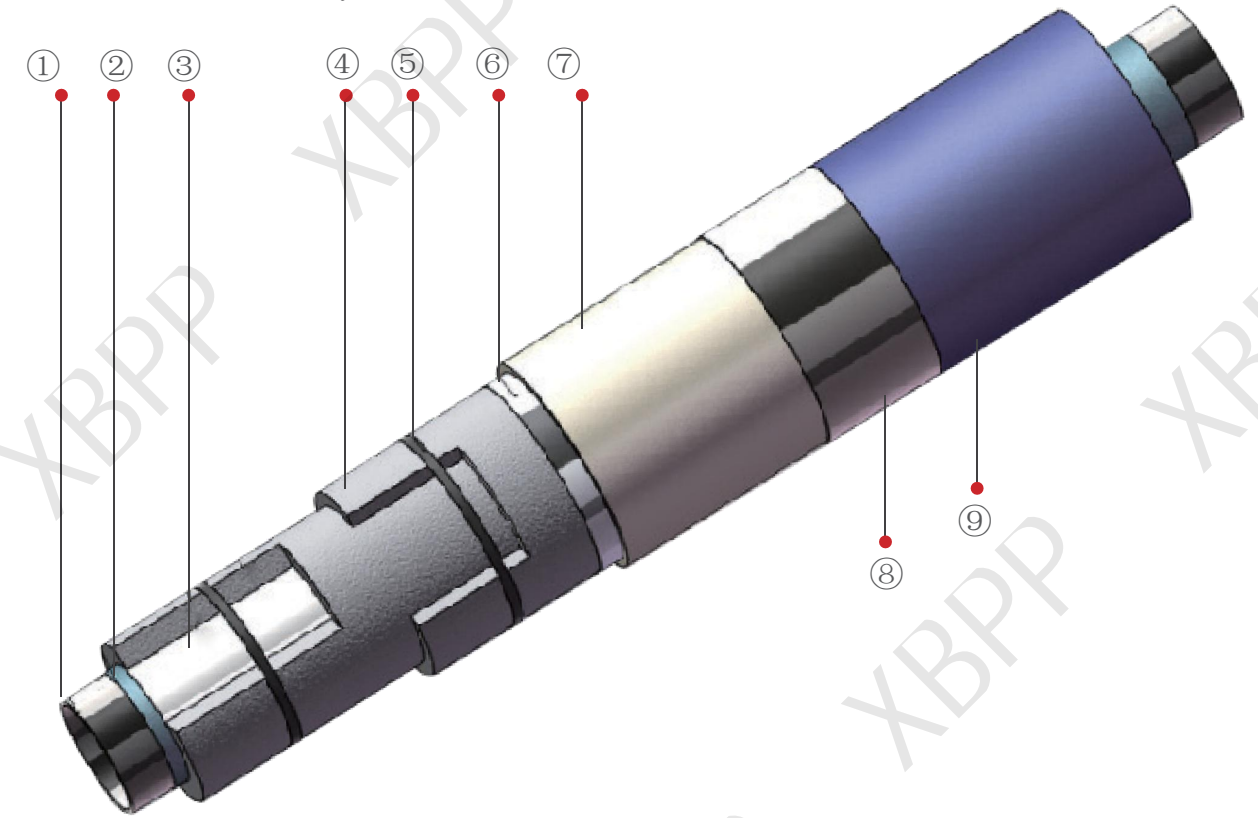
Application scope:

Applicable to high temperature pipelines of buried, overhead and utility tunnels whose conveying medium temperature is less than or equal to 350°C and nominal pressure is less than or equal to PN25.

Prefabricated directly buried steam insulated pipe

Internal sliding product structure chart

The insulation structure consists of working steel pipe, anti-corrosion coating, damping layer, thermal insulation layer, stainless steel fastener, reflecting layer, PUR insulating layer, casing pipe and external anti-corrosion layer, as shown below



- ① Working Steel Pipe
- ② Anti-corrosion Layer
- ③ Damping Layer
- ④ Thermal Insulation Layer
- ⑤ Stainless Steel Fastener
- ⑥ Reflecting Layer
- ⑦ PUR Insulating Layer
- ⑧ Casing Pipe
- ⑨ External Anti-corrosion Layer

DN₂₅
DN1000mm

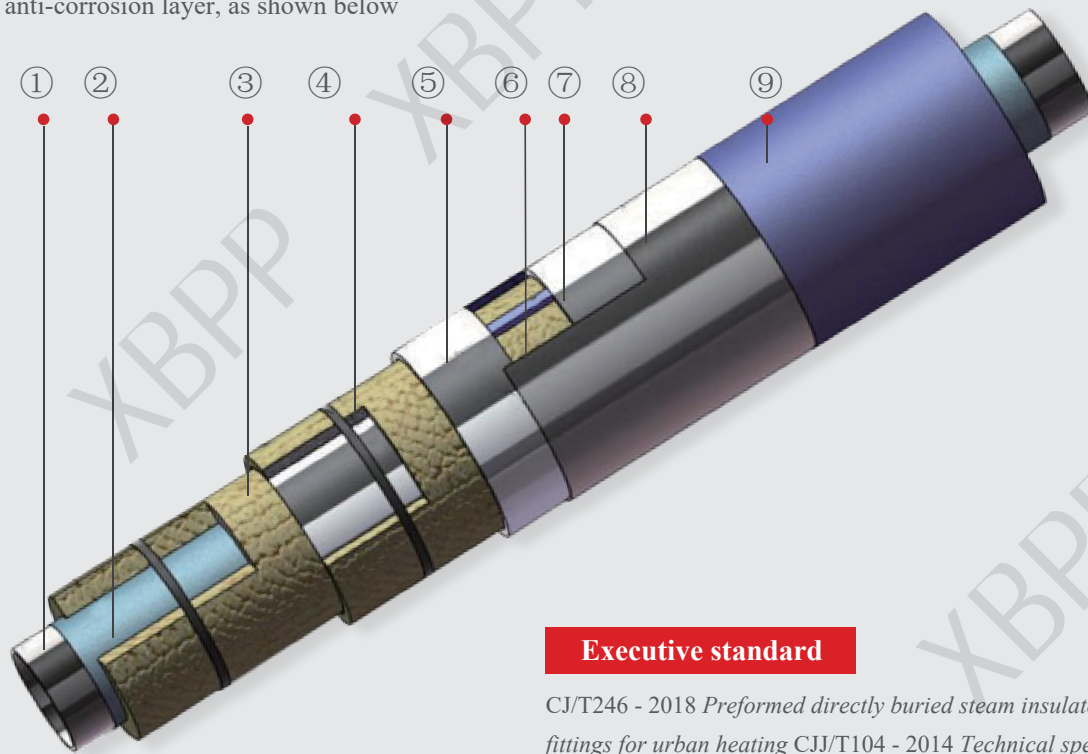
Production scope

100KM+/year

Production capacity

External sliding product structure chart

The external sliding product structure consists of working steel pipe, anti-corrosion coating, thermal insulation material, stainless steel fastener, reflecting layer, air layer, sliding/guide bracket, casing pipe and external anti-corrosion layer, as shown below



Executive standard

CJ/T246 - 2018 *Preformed directly buried steam insulated pipes and fittings for urban heating*
CJJ/T104 - 2014 *Technical specification for directly buried steam heating pipeline in city*

- ① Working Steel Pipe
- ② Anti-corrosion Coating
- ③ Thermal Insulation Material
- ④ Stainless Steel Fastener
- ⑤ Reflecting Layer
- ⑥ Air Layer
- ⑦ Sliding/Guide Bracket
- ⑧ Casing Pipe
- ⑨ External Anti-corrosion Layer

Specification table of steel steam insulated pipes

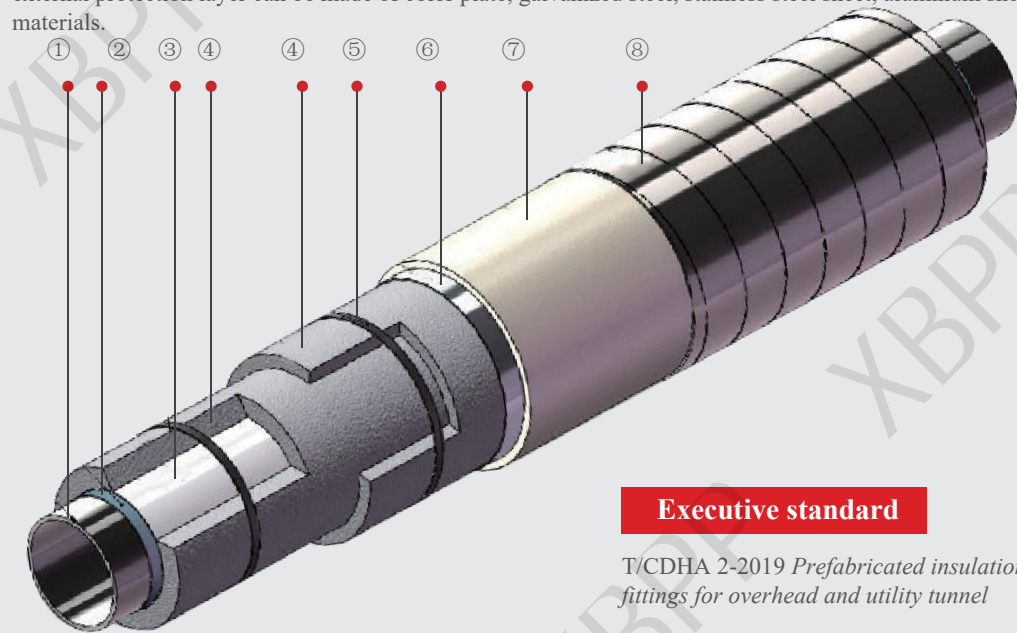
(The wall thickness of working steel pipe and jacket is for reference only, and the design standard should apply in practical application)

Specification/Model	Outer diameter* wall thickness of working steel pipe (mm)	Outer diameter* wall thickness of outer steel pipe (mm)	Thickness of thermal insulation layer (mm)	
			Thermal insulation layer	Air layer
57/219	57*3.5	219*6.0	60	15
76/273	76*4.0	273*6.0	77	15.5
89/273	89*4.5	273*6.0	70	16
108/325	108*4.5	325*7.0	85	16.5
133/377	133*4.5	377*7.0	100	15
159/377	159*6.0	426*7.0	110	16.5
219/478	219*6.0	478*7.0	110	16
273/529	273*6.0	529*7.0	110	11
325/630	325*7.0	630*8.0	130	14.5
377/720	377*7.0	720*10.0	150	11.5
426/820	426*7.0	820*10.0	172	15
478/820	478*7.0	820*10.0	150	11
529/920	529*7.0	920*10.0	170	15.5
630/1020	630*8.0	1020*10.0	170	15
720/1220	720*10.0	1220*12.0	223	15
820/1320	820*10.0	1320*12.0	223	15

Prefabricated steam insulated pipes of overhead and utility tunnels

Product structure

The insulation structure consists of working steel pipe, anti-corrosion coating, damping layer, thermal insulation layer, stainless steel fastener, aluminum foil reflecting layer, PUR insulating layer and spiral external protection layer. The external protection layer can be made of color plate, galvanized steel, stainless steel sheet, aluminum sheet and other materials.



Executive standard

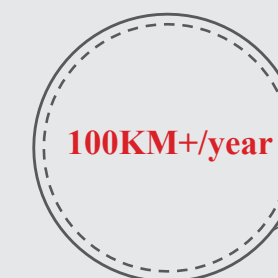
T/CDHA 2-2019 Prefabricated insulation steam pipes and fittings for overhead and utility tunnel

- ① Working Steel Pipe
- ② Anti-corrosion Coating
- ③ Damping Layer
- ④ Thermal Insulation Layer
- ⑤ Stainless Steel Fastener
- ⑥ Aluminum Foil Reflecting Layer
- ⑦ PUR Insulating Layer
- ⑧ Spiral Steel External Protection Layer

Production scope and capacity



Production scope



Production capacity

Product advantages

- (1) It is applicable to pipe networks in the overhead and utility tunnels whose conveying medium temperature is no greater than 350°C and nominal pressure is less than or equal to PN25;
- (2) It can avoid great heat loss of the site, and deformation, shedding and leakage of the insulating layer, and can produce a good waterproof, anti-corrosion and sealing effect of casing pipe;
- (3) B1 anti-flaming PUR insulation materials can be used in the utility tunnel to reduce potential safety hazards during installation and ensure construction and operation safety;
- (4) The external protection layer is made of galvanized sheet (whose zinc content is >180g/m), aluminum sheet, stainless steel, color plate and other metallic materials;
- (5) The sliding bracket can adopt externally wrapped insulation bracket and bracket that reduce heat loss;

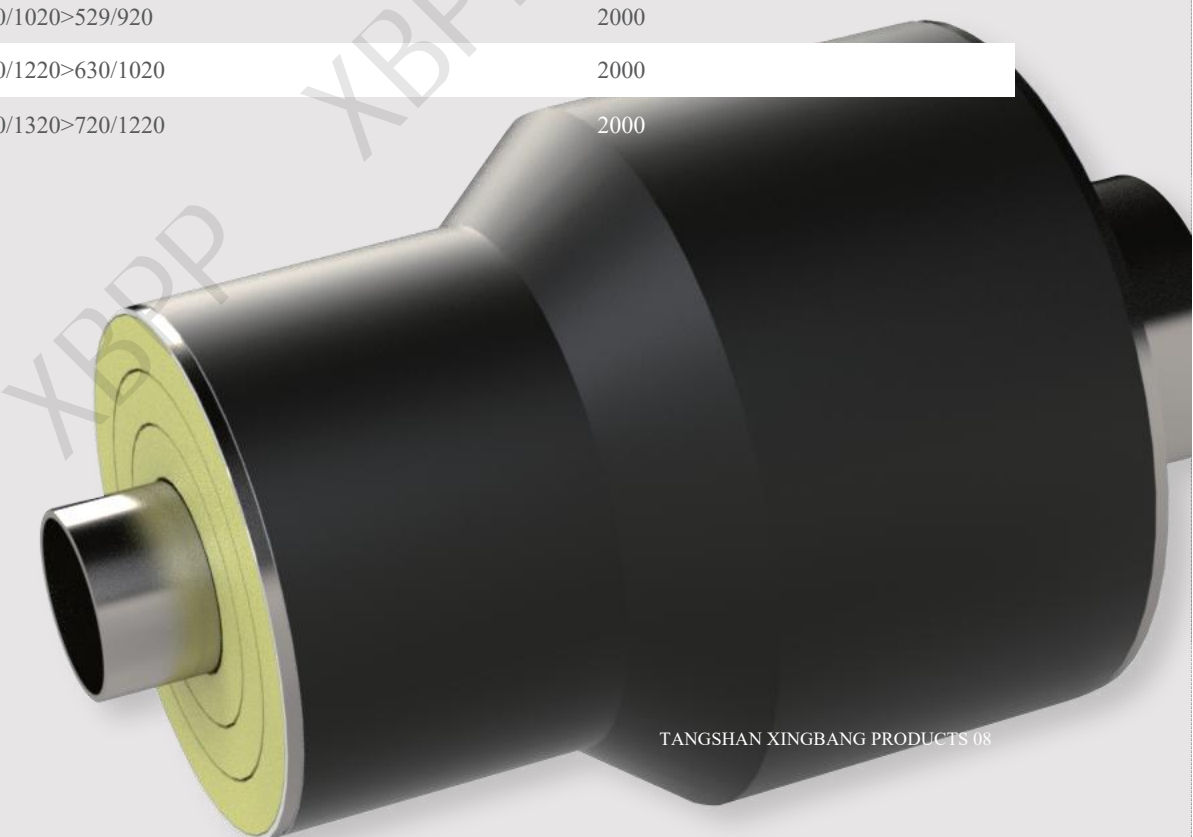
Wall thickness of casing pipe

Outer diameter of casing pipe	Minimum nominal wall thickness	
	Color plate, galvanized steel, aluminum sheet	Stainless steel sheet
90 ~ 250	0.5	0.4
251 ~ 500	0.6	0.5
501 ~ 800	0.8	0.6
801 ~ 1400	1.0	0.8
1401 ~ 2000	1.2	1.0

Prefabricated steam insulated pipe

Specification table of prefabricated steam insulation reducer pipes

Specification	L (mm)
76/273>57/219	1500
89/273>76/273	1500
108/325>89/273	1500
133/377>108/328	1500
159/377>133/377	1500
219/478>159/377	1500
273/529>219/478	1500
325/630>273/529	1600
377/720>325/630	1600
426/820>377/720	2000
478/820>426/820	2000
529/920>478/820	2000
630/1020>529/920	2000
720/1220>630/1020	2000
820/1320>720/1220	2000





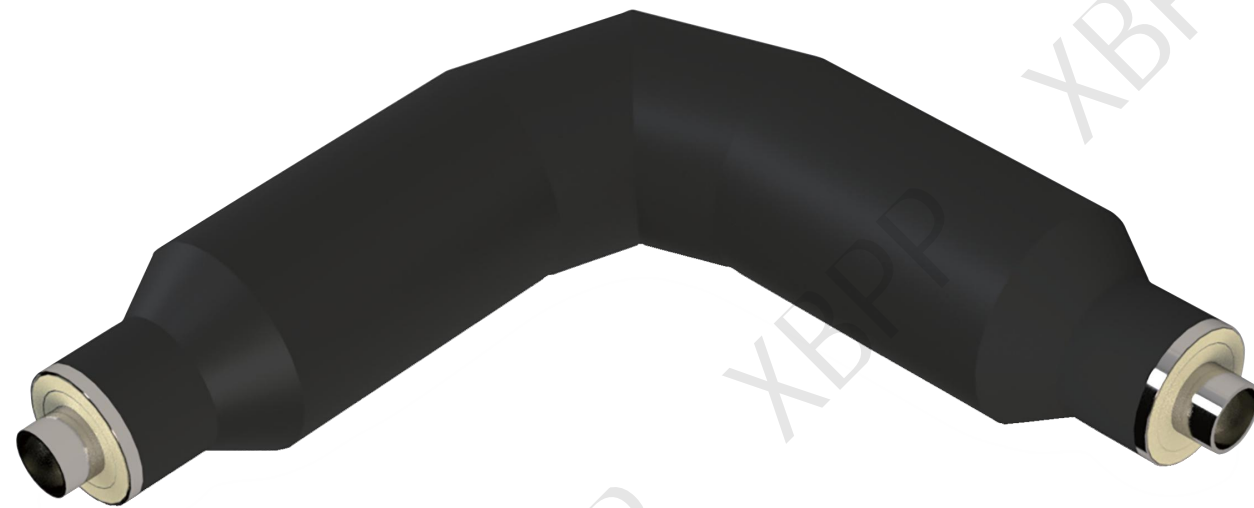
Specification table of prefabricated steam insulation T-pipes

Branch pipe Main pipe	57/219		76/273		89/273		108/325		133/377		159/377		219/478		273/529	
	H	L	H	L	H	L	H	L	H	L	H	L	H	L	H	L
57/219	570	1500														
76/273	597	1500	597	1500												
89/273	597	1500	597	1500	597	1500										
108/325	623	1500	623	1500	623	1500	623	1500								
133/377	649	1500	649	1500	649	1500	649	1500	649	1500						
159/377	649	1500	649	1500	649	1500	649	1500	649	1500	649	1500				
219/478	699	1500	699	1500	699	1500	699	1500	699	1500	699	1500	699	1500		
273/529	725	1500	725	1500	725	1500	725	1500	725	1500	725	1500	725	1500	725	1500
325/630	775	1500	775	1500	775	1500	775	1500	775	1500	775	1500	775	1500	775	1500
377/720	820	1500	820	1500	820	1500	820	1500	820	1500	820	1500	820	1500	820	1500
426/820	870	1500	870	1500	870	1500	870	1500	870	1500	870	1500	870	1500	870	1500
478/820	870	1500	870	1500	870	1500	870	1500	870	1500	870	1500	870	1500	870	1500
529/920	920	1500	920	1500	920	1500	920	1500	920	1500	920	1500	920	1500	920	1500
630/1020	970	1500	970	1500	970	1500	970	1500	970	1500	970	1500	970	1500	970	1500
720/1220	1070	1500	1070	1500	1070	1500	1070	1500	1070	1500	1070	1500	1070	1500	1070	1500
820/1220	1070	1500	1070	1500	1070	1500	1070	1500	1070	1500	1070	1500	1070	1500	1070	1500
Branch pipe Main pipe	325/630		377/720		426/820		478/820		529/920		630/1020		720/1220		820/1320	
	H	L	H	L	H	L	H	L	H	L	H	L	H	L	H	L
325/630	775	2000														
377/720	820	2000	820	2300												
426/820	870	2000	870	2300	870	2400										
478/820	870	2000	870	2300	870	2400	870	2600								
529/920	920	2000	920	2300	920	2400	920	2600	920	2700						
630/1020	970	2000	970	2300	970	2400	970	2600	970	2700	970	3000				
720/1220	1070	2000	1070	2300	1070	2400	1070	2600	1070	2700	1070	3000	1070	3300		
820/1320	1070	2000	1070	2300	1070	2400	1070	2600	1070	2700	1070	3000	1070	3300	1070	3600



Specification table of prefabricated steam insulation elbows (standard)

Specification & model (mm)	Outer diameter of working steel pipe × wall thickness (mm)	Outer diameter of outer steel pipe × wall thickness (mm)	L(mm)	
			1.5D	2.5D
57/219	57×3.5	219×6.0	1000	1000
76/273	76×4.0	273×6.0	1000	1000
89/273	89×4.5	273×6.0	1000	1000
108/325	108×4.5	325×7.0	1050	1150
133/377	133×4.5	377×7.0	1100	1200
159/377	159×4.5	377×7.0	1150	1300
219/478	219×6.0	478×7.0	1200	1400
273/529	273×6.0	529×7.0	1300	1500
325/630	325×7.0	630×8.0	1350	1550
377/720	377×7.0	720×10.0	1450	1750
426/820	426×7.0	820×10.0	1700	2050
478/820	478×7.0	820×10.0	1750	2200
529/920	529×7.0	920×10.0	1850	2300
630/1020	630×8.0	1020×10.0	1950	2550
720/1220	720×10.0	1220×10.0	2100	2800
820/1320	820×10.0	1320×12.0	2250	3050



Specification table of prefabricated steam insulation elbows (level I compensation)

Specification & model (mm)	Outer diameter of working steel pipe × wall thickness (mm)	Outer diameter of outer steel pipe × wall thickness (mm)	Compensation (mm)	L(mm)	
				1.5D	2.5D
57/219	57×3.5	219×6.0<325×7.0	67	1200	1200
76/273	76×4.0	273×6.0<377×7.0	67	1350	1350
89/273	89×4.5	273×6.0<377×7.0	67	1350	1350
108/325	108×4.5	325×7.0<377×7.0	58	1350	1350
133/377	133×4.5	377×7.0<377×7.0	60	1400	1450
159/377	159×4.5	377×7.0<478×7.0	68	1450	1500
219/478	219×6.0	478×7.0<529×7.0	48	1600	1750
273/529	273×6.0	529×7.0<630×8.0	66	1800	1950
325/630	325×7.0	630×8.0<720×10.0	63	1850	2050
377/720	377×7.0	720×10.0<820×10.0	72	1900	2150
426/820	426×7.0	820×10.0<920×10.0	97	2000	2300
478/820	478×7.0	820×10.0<920×10.0	71	2000	2400
529/920	529×7.0	920×10.0<1020×10.0	71	2100	2550
630/1020	630×8.0	1020×10.0<1120×10.0	70	2250	2750
720/1220	720×10.0	1220×10.0<1320×10.0	68	2100	2800
820/1320	820×10.0	1320×12.0<1420×10.0	68	2500	3150



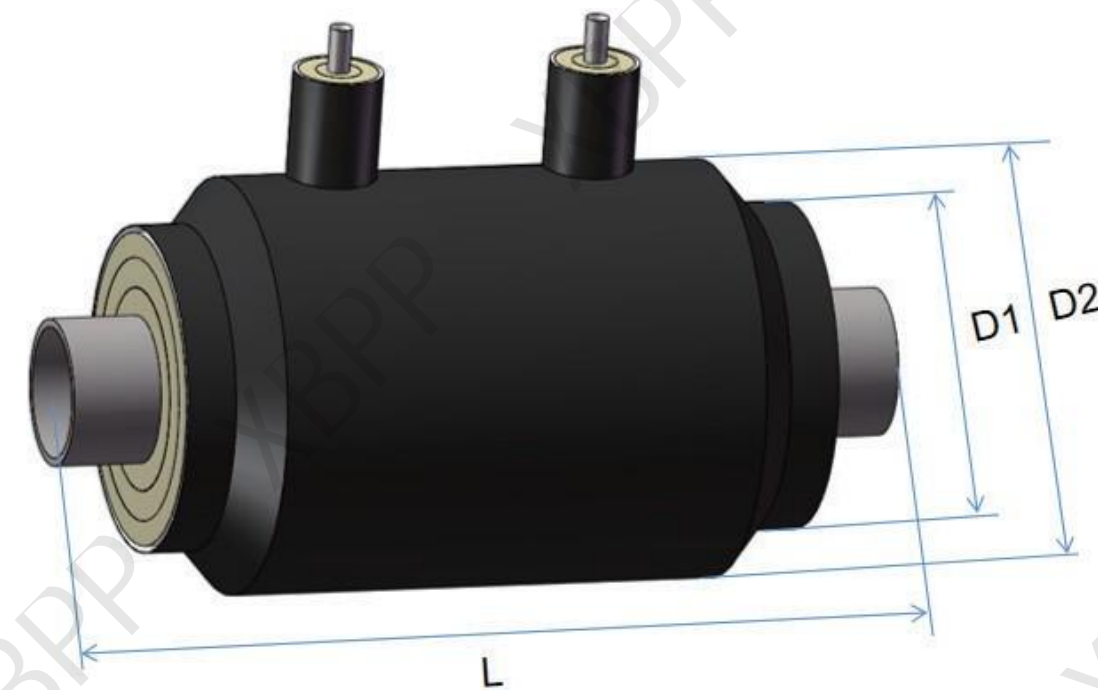
Specification table of prefabricated steam insulation elbows (level II compensation)

Specification & model (mm)	Outer diameter of working steel pipe × wall thickness (mm)	Outer diameter of outer steel pipe × wall thickness (mm)	Compensation (mm)	L(mm)	
				1.5D	2.5D
57/219	57×3.5	219×6.0<426×7.0	118	1400	1400
76/273	76×4.0	273×6.0<478×7.0	129	1400	1400
89/273	89×4.5	273×6.0<478×7.0	118	1450	1450
108/325	108×4.5	325×7.0<478×7.0	108	1450	1600
133/377	133×4.5	377×7.0<529×7.0	111	1600	1800
159/377	159×4.5	377×7.0<630×8.0	143	1750	1850
219/478	219×6.0	478×7.0<720×8.0	141	1800	2000
273/529	273×6.0	529×7.0<720×8.0	109	1800	2100
325/630	325×7.0	630×8.0<820×8.0	113	1850	2200
377/720	377×7.0	720×10.0<920×10.0	122	1950	2300
426/820	426×7.0	820×10.0<1020×10.0	147	2000	2400
478/820	478×7.0	820×10.0<1020×10.0	121	2050	2550
529/920	529×7.0	920×10.0<1120×10.0	121	2150	2750
630/1020	630×8.0	1020×10.0<1220×12.0	118	2250	2950
720/1220	720×10.0	1220×12.0<1420×12.0	168	2400	3150
820/1320	820×10.0	1320×12.0<1520×12.0	116	2500	3150



Specification table of preformed steam insulation drain traps

Specification & model (mm)	Lower drain pipe			Upper drain pipe			
	Collector pipe D	H	L	Collector pipe D	H1	H2	L
57/219	32	500	1500	32	500	810	1500
76/273	45	520	1500	45	520	860	1500
89/273	57	520	1500	57	520	860	1500
108/325	76	550	1500	76	550	920	1500
133/377	89	570	1500	89	570	950	1500
159/377	108	570	1600	108	570	950	1600
219/478	133	620	1600	133	620	1060	1600
273/529	159	650	1800	159	650	1120	1800
325/630	219	700	1800	219	700	1220	1800
377/720	219	750	1800	219	750	1320	1800
426/820	273	800	2000	273	800	1420	2000
478/820	273	800	2000	273	800	1420	2000
529/920	325	850	2000	325	850	1520	2000
630/1020	325	900	2000	325	900	1620	2000
720/1220	377	1000	2000	377	1000	1820	2000
820/1320	377	1050	2000	377	1050	1920	2000



Specification table of prefabricated steam insulation internal fixed supports

Specification & model (mm)	D1	D2	L
57	219	325	1200
76	273	377	1200
89	273	377	1200
108	325	478	1200
133	377	478	1200
159	377	478	1200
219	478	630	1300
273	529	630	1300
325	630	720	1300
377	720	820	1300
426	820	920	1500
478	820	920	1500
529	920	1020	1500
630	1020	1120	1500
720	1220	1320	1500
820	1320	1420	1500